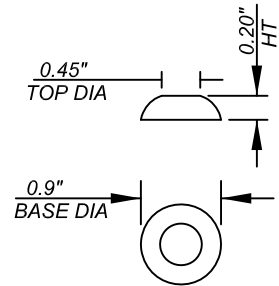
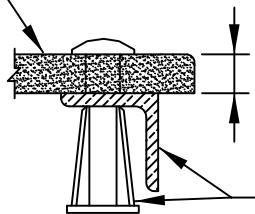


**RAISED TRUNCATED DOME PATTERN
(IN-LINE)**



RAISED TRUNCATED DOME

DETECTABLE WARNING TILE
MANUFACTURED BY ARMORCAST
PRODUCT COMPANY OR APPROVED EQUAL





ANCHOR DETAIL

1/2" THICK MIN (EXCLUDING TRUNCATED
DOME HEIGHT)

STEEL ANGLE AND CONCRETE ANCHOR
MANUFACTURED BY ARMORCAST
PRODUCT COMPANY OR APPROVED EQUAL

NOTES:

- 1.) DETECTABLE WARNING, MOUNTED FLUSH, SURFACE SHALL BE CAST-IN-PLACE DETECTABLE WARNING TILE WITH STEEL ANGLES AND ANCHORS, MANUFACTURED BY ARMORCAST PRODUCTS COMPANY OR APPROVED EQUAL, AND SHALL MEET ALL ADA REQUIREMENTS AS WELL AS STATE TITLE 24 REQUIREMENTS.
- 2.) COLOR SHALL BE YELLOW CONFORMING TO FEDERAL STANDARD 595B, COLOR NO. 33538.
- 3.) DETECTABLE WARNING SURFACE SHALL CONFORM TO THE DETAILS ON THIS STANDARD PLAN.
- 4.) DETECTABLE WARNING SURFACE SHALL BE FULL WIDTH OF RAMP AND 3 FOOT MINIMUM IN DEPTH OF RAMP AND UTILIZE A SINGLE PIECE.
- 5.) DETECTABLE WARNING SURFACE SHALL BE INSTALLED SO THAT DOMES ARE ALIGNED PARALLEL TO CENTERLINE OF ACCESS RAMP.
- 6.) THE EDGE OF THE DETECTABLE WARNING SURFACE NEAREST THE STREET SHALL BE BETWEEN 6" AND 8" FROM THE GUTTER FLOW LINE.
- 7.) RETROFIT INSTALLATION SHALL BE DETECTABLE WARNING TILE (PER NOTE 1) TIED DOWN TO EXISTING RAMP SURFACE WITH ANCHORS AND SEALED WITH WATERPROOFING ADHESIVE. NO SELF-ADHESIVE SURFACE APPLIED DOME MATS ALLOWED. TILE SHALL BE INSTALLED FLUSH WITH THE RAMP SURFACE. PERIMETER "LIP" SHALL NOT EXCEED 1/4".

CAPITAL PROJECTS		DATE	1/12	CITY OF MORENO VALLEY PREPARED BY CAPITAL PROJECTS
APPROVED BY		DIVISION MANAGER INITIAL		
 DEPUTY PUBLIC WORKS DIRECTOR/ ACTING CITY ENGINEER		 DIVISION MANAGER INITIAL		3 of 3 NO. 214C
DETECTABLE WARNING SURFACE DETAILS AND NOTES				