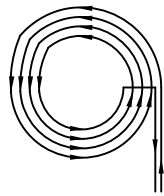


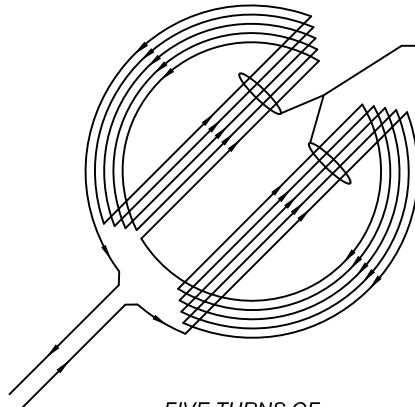
# WINDINGS

TYPE "E" LOOP



FOUR TURNS OF LOOP WIRE

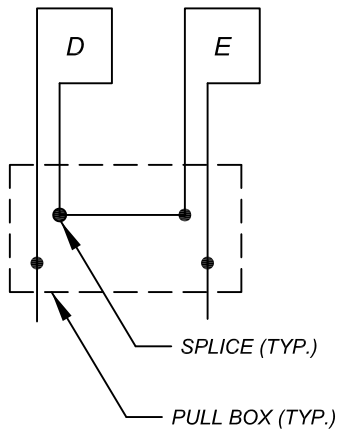
TYPE "D" LOOP (MOD.)



FIVE TURNS OF LOOP WIRE

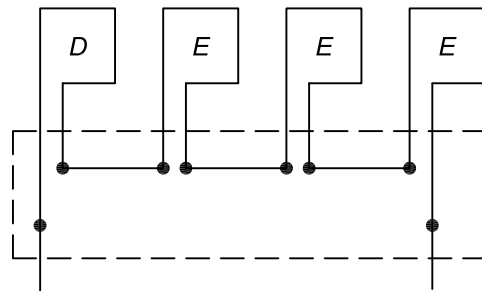
# CONNECTIONS

TWO LOOPS IN LANE



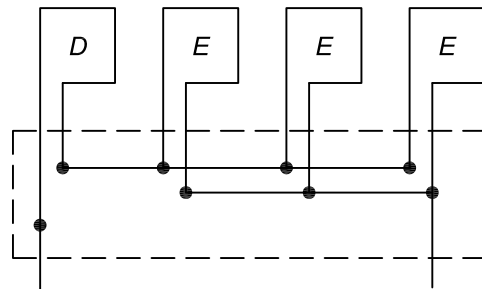
FOUR LOOPS IN LANE

SERIES



WIRING METHOD TO BE DETERMINED BY THE ENGINEER.

SERIES/  
PARALLEL



SEE STANDARD PLAN 420A OR 420B (AS APPLICABLE) FOR ADDITIONAL REQUIREMENTS.

TRANSPORTATION	DATE	1/12	<b>CITY OF MORENO VALLEY</b>	
APPROVED BY			PREPARED BY CAPITAL PROJECTS	
	DIVISION MANAGER INITIAL <b>EL</b>		<b>TRAFFIC INDUCTION LOOPS</b>	
DEPUTY PUBLIC WORKS DIRECTOR/ ACTING CITY ENGINEER			<b>WIRING DETAILS</b>	
			3 of 3	
			NO. <b>420C</b>	