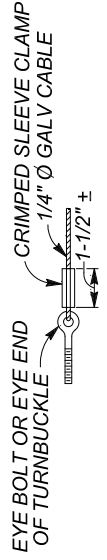


RETAINING WALL (WITH GUTTER)
NEW CONSTRUCTION

RETAINING WALL (WITH GUTTER)
EXISTING

EXISTING WALL (WITHOUT GUTTER)
EXISTING



ALTERNATIVE CABLE CONNECTION

NOTES:

1. MAXIMUM DISTANCE BETWEEN TURNBUCKLES SHALL BE 200' ±.
2. INTERMEDIATE TURNBUCKLES TO BE PLACED IN ADJACENT SPANS.
3. CABLE SHALL NOT BE SPLICED BETWEEN INTERMEDIATE TURNBUCKLES AND END POSTS.
4. ALL POSTS, CABLE, AND HARDWARE TO BE GALVANIZED.
5. POSTS TO BE VERTICAL.
6. ALIGNMENT OF HOLES IN POSTS MAY VARY TO CONFORM TO SLOPE OF TOP OF RETAINING WALL.
7. THE CONTRACTOR SHALL VERIFY ALL DEPENDENT DIMENSIONS IN THE FIELD BEFORE ORDERING OR FABRICATING ANY MATERIAL.
8. ALTERNATIVE DETAILS MAY BE SUBMITTED BY THE CONTRACTOR FOR APPROVAL BY THE ENGINEER.
9. LINE POSTS SHALL BE BRACED HORIZONTALLY AND TRUSSED DIAGONALLY IN BOTH DIRECTIONS AT INTERVALS NOT TO EXCEED 1000'.
10. POST POCKETS TO BE CENTERED IN TOP OF WALL.
11. TYPICAL END SPANS, BRACED IN BOTH DIRECTIONS, SHALL BE CONSTRUCTED AT CHANGES IN LINE WHERE THE ANGLE OF DEFLECTION IS 15° OR MORE.
12. PROVIDE THIMBLES AT ALL CABLE LOOPS.
13. APPLY EPOXY TO EYE AND TURNBUCKLE THREAD ENDS.



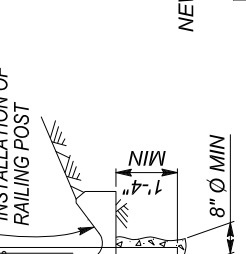
SECTION B-B
EXISTING



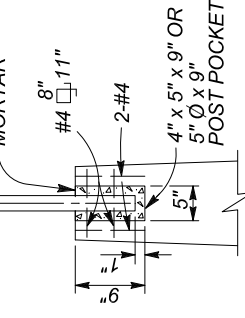
SECTION C-C
NEW CONSTRUCTION



SECTION A-A
EXISTING



ALTERNATIVE DEAD END ANCHORAGE



POST POCKET

PARKS AND COMMUNITY SERVICES		DATE	1/10
APPROVED BY	DIVISION MANAGER INITIAL		
PUBLIC WORKS DIRECTOR/ CITY ENGINEER			

CITY OF MORENO VALLEY

PREPARED BY CAPITAL PROJECTS

CABLE RAILING

1 of 1

NO.

567