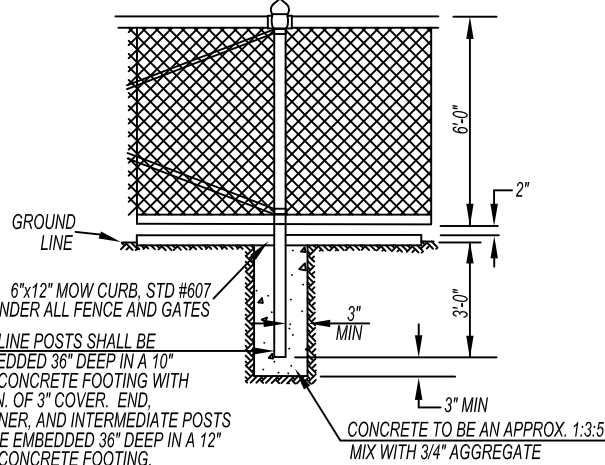
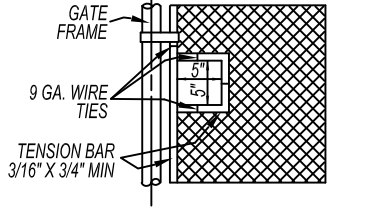


**TYPICAL WALK GATE**

**TYPICAL DRIVE GATE**



**TYPICAL FENCE POST FOOTING EMBEDMENT DETAIL**



**DETAIL OF CUT-OUT FOR CHAIN AND LOCK**

**NOTES:**

- 1.) SECURE DRIVE FIT GALVANIZED CAP TO POST WITH 1/4" ROUND HEAD RIVET.
- 2.) TYPICAL HEIGHT IS 6'-0" UNLESS OTHERWISE SPECIFIED. MID RAILS ARE REQUIRED ON FENCE OVER 6'.
- 3.) 6' CHAIN LINK FENCE TO HAVE TOP AND BOTTOM RAIL. RAILS AT INTERMEDIATE, END, AND ANY CHANGE OF DIRECTION.
- 4.) TYPICAL FABRIC IS 2", 9 GA. GAW, WITH KNUCKLED (KK) SELVAGED ENDS. 3 GA. COLOR VINYL OVER FABRIC AS SPECIFIED.
- 5.) ALL DATA SHOWN ON TYPICAL DETAILS SHALL BE APPLICABLE TO OTHER PERTINENT DETAILS AND PARK SPECIFICATIONS.
- 6.) THE GALVANIZING OF THE FENCE FABRIC SHALL PRODUCE A ZINC COATING WEIGHING NOT LESS THAN 1.2 OZ. PER SQ. FT.
- 7.) POSTS AND RAILS TO BE SCH 40 OR SS 40 (UNLESS OTHERWISE SPECIFIED).
- 8.) VINYL COATED FENCING REQUIRES VINYL COATED POSTS AND FITTINGS OVER GALVANIZED COATING
- 9.) MINIMUM LINE POST SIZE IS 2-3/8". MINIMUM TERMINAL POST SIZE IS 2-7/8".

PARKS AND COMMUNITY SERVICES	DATE	1/08
APPROVED BY	DIVISION MANAGER INITIAL	
PUBLIC WORKS DIRECTOR/ CITY ENGINEER		

**CITY OF MORENO VALLEY**

PREPARED BY CAPITAL PROJECTS

**PARK PROJECTS  
CHAIN LINK FENCE  
AND GATES**

3 of 3  
NO.  
**604C**