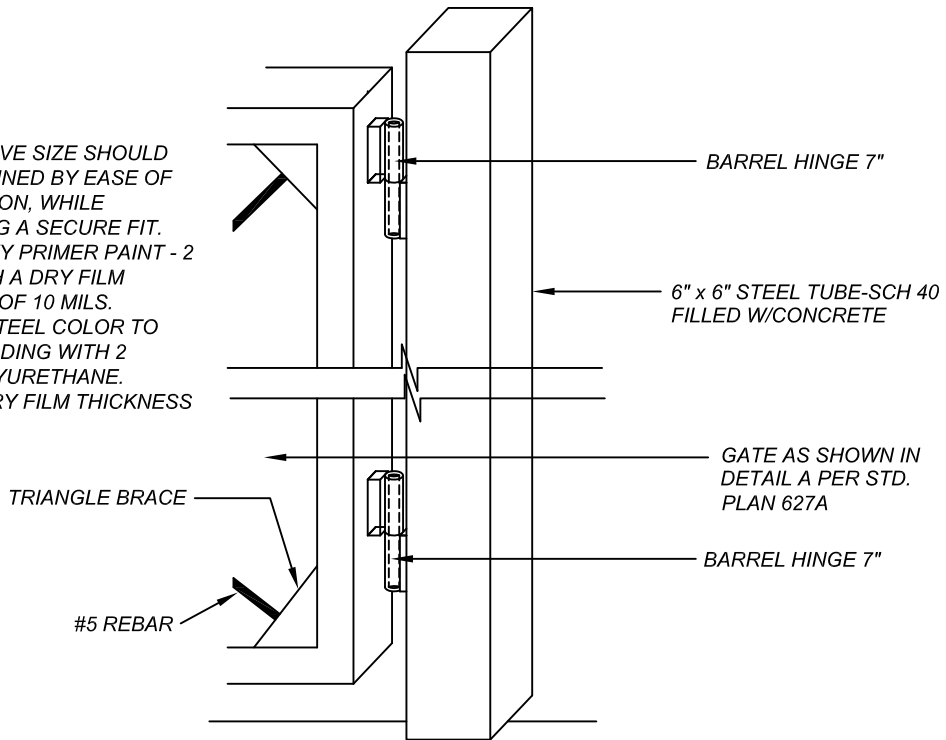
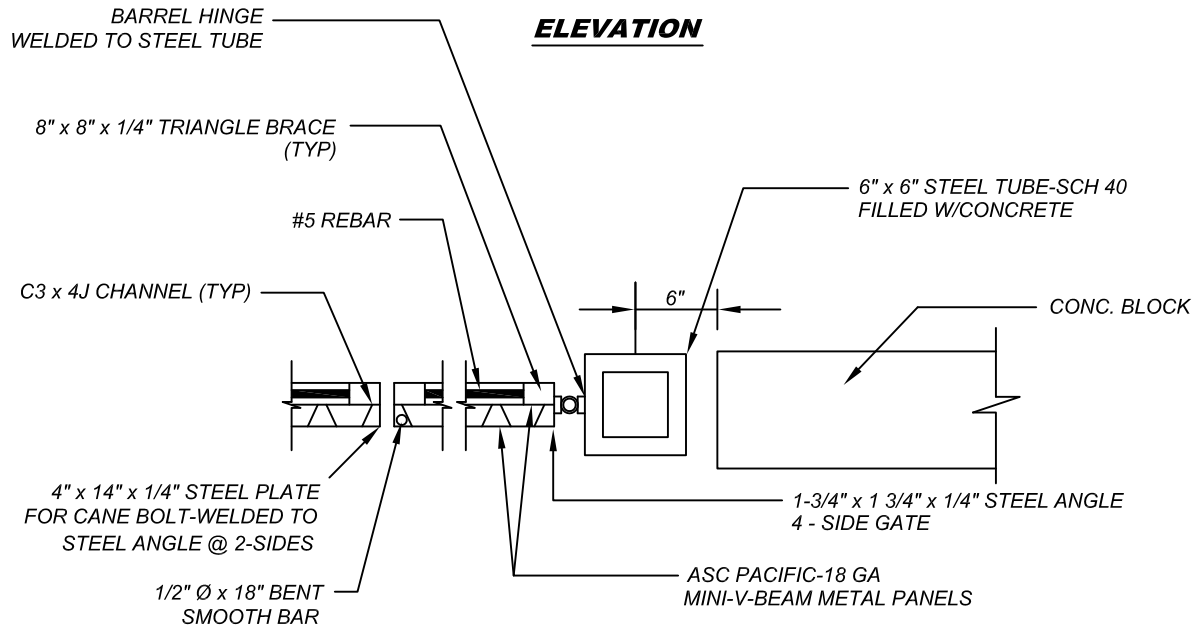


NOTES:

- 1.) STEEL SLEEVE SIZE SHOULD BE DETERMINED BY EASE OF SWING ACTION, WHILE MAINTAINING A SECURE FIT.
- 2.) PAINT EPOXY PRIMER PAINT - 2 COATS WITH A DRY FILM THICKNESS OF 10 MILS.
- 3.) PAINT ALL STEEL COLOR TO MATCH BUILDING WITH 2 COATS POLYURETHANE. MINIMUM DRY FILM THICKNESS OF 4 MILS.



ELEVATION



DETAIL B

NOTE:
ALL STEEL TO BE HOT DIPPED GALVANIZED.

PARKS AND COMMUNITY SERVICES		DATE	01/09
APPROVED BY	DIVISION MANAGER INITIAL		
PUBLIC WORKS DIRECTOR/ CITY ENGINEER			

CITY OF MORENO VALLEY
PREPARED BY CAPITAL PROJECTS

WASTE ENCLOSURE GATE HINGE	6 OF 6
	NO. 627F