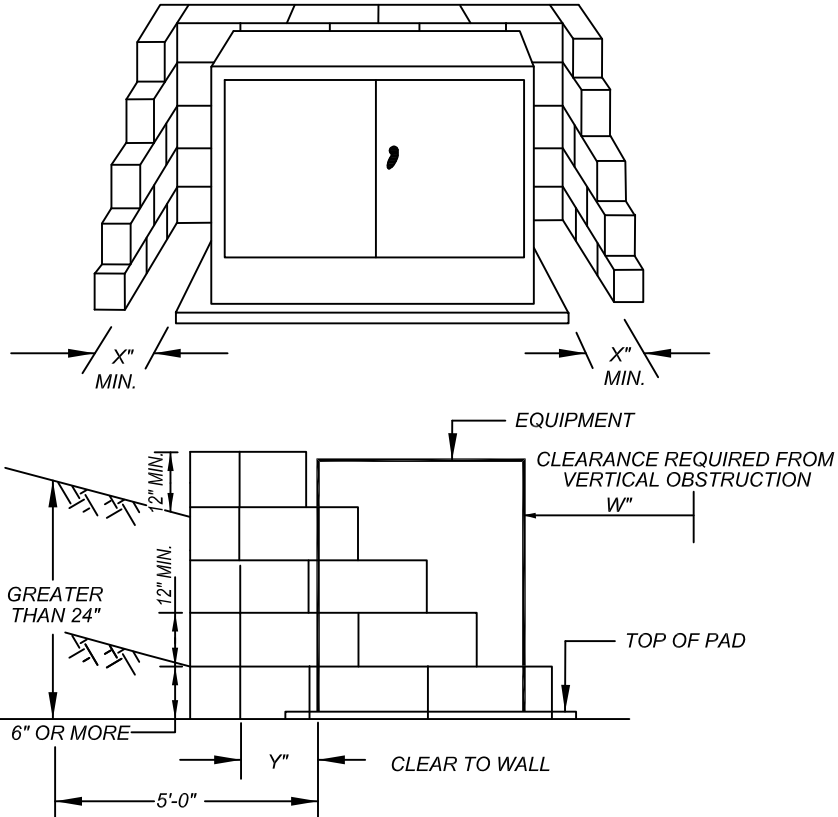


MORENO VALLEY STANDARD NO. 823


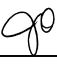
**RETAINING WALLS FOR
PAD MOUNTED SWITCHES & TRANSFORMERS**



EQUIPMENT TYPE MINIMUM CLEARANCES	"W"	"X"	"Y"
TRANSFORMERS FRONT DOOR WORKING CLEARANCE	72"	---	---
TRANSFORMERS SIDE(S) CLEARANCE	---	18"	---
TRANSFORMERS REAR CLEARANCE	---	---	12"
SWITCHGEAR FRONT DOOR WORKING CLEARANCE	72"	---	---
SWITCHGEAR REAR DOORS WORKING CLEARANCE	---	---	72"
SWITCHGEAR SIDE(S) WORKING CLEARANCE	---	60"	---

NOTES:

1. RETAINING WALLS ARE REQUIRED WHERE A SLOPING GRADE RISES 24" OR MORE AT A HORIZONTAL DISTANCE OF 5' OR LESS FROM THE EDGE OF PAD OR ENCLOSURE.
2. RETAINING WALLS ARE ALSO REQUIRED WHENEVER THE GRADE RISES 6" ABOVE THE TOP OF PAD (SEE DRAWING DETAILS).
3. RETAINING WALLS MUST BE APPROVED BY BUILDING DEPARTMENT AND REQUIRES A SEPARATE PERMIT(S) . SEE STANDARD 609A AND 609B.

MORENO VALLEY ELECTRIC UTILITY DATE 1/12		CITY OF MORENO VALLEY PREPARED BY CAPITAL PROJECTS	
APPROVED BY  DEPUTY PUBLIC WORKS DIRECTOR/ ACTING CITY ENGINEER	DIVISION MANAGER INITIAL 		
		RETAINING WALLS FOR PAD-MOUNTED SWITCHES & TRANSFORMERS	