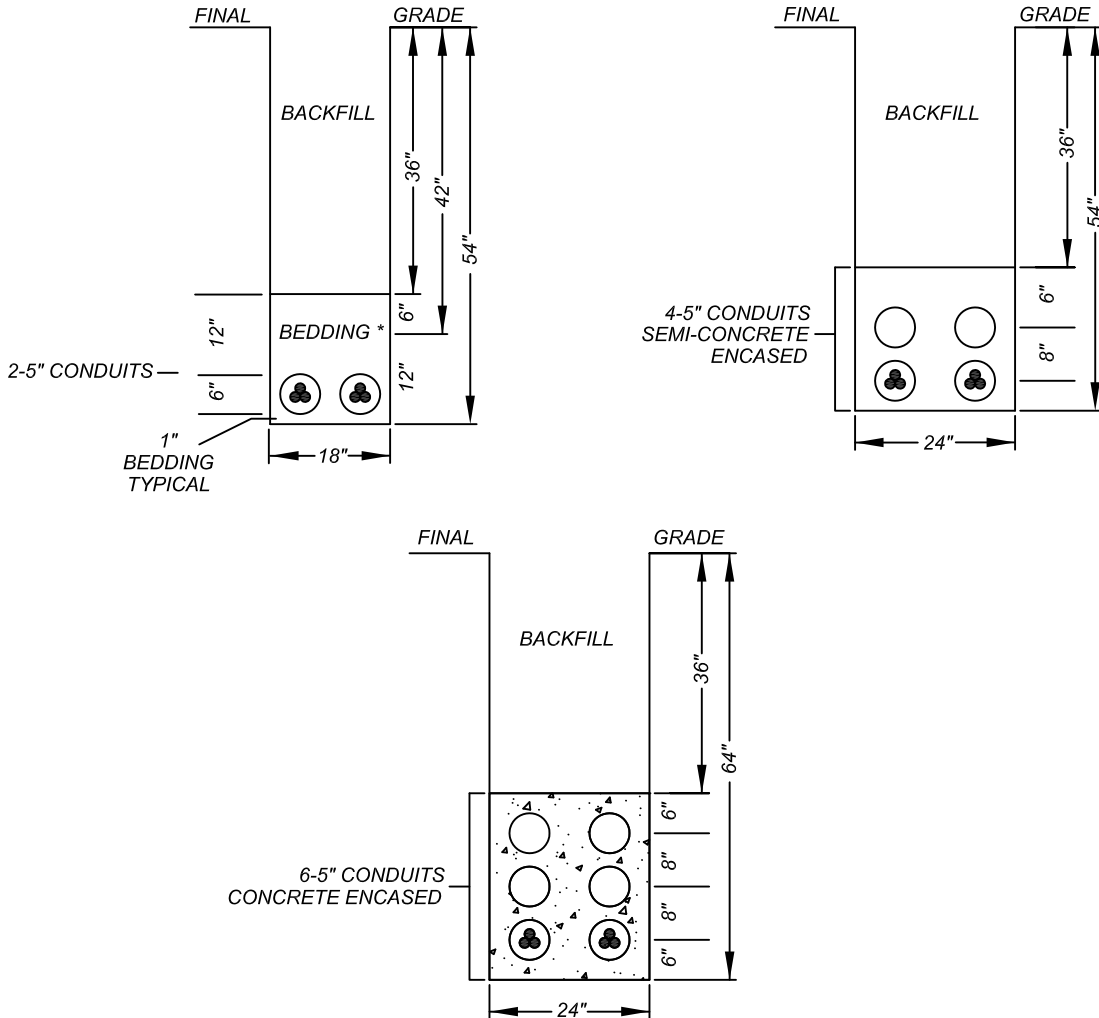


MORENO VALLEY STANDARD NO. 824B

**ELECTRIC ONLY TRENCH DETAILS FOR  
CONDUIT INSTALLATIONS**



**NOTES:**

- 1.) BEDDING MATERIAL SHALL BE CLEAN SAND OR PEA GRAVEL. OTHERWISE, NATIVE MATERIALS MAY BE USED PROVIDED THEY MEET PUBLIC WORKS CONSTRUCTION (GREEN BOOK) STANDARDS PER SUBSECTION 306.1.2.1 AND MUST HAVE A SAND EQUIVALENT OF NOT LESS THAN 30 OR HAVING A COEFFICIENT OF PERMEABILITY GREATER THAN 1.4 INCHES/HR.
- 2.) CONDUITS ARE DB, EB, OR SCH 40 DEPENDING ON APPLICATION PER PLAN.
- 3.) FOR CONDUIT INSTALLATION IN A BORE, SEE STD. PLANS 827A & 827B.
- 4.) FOR CONDUIT INSTALLATION IN EXISTING ROADWAYS, SEE STD PLANS 602 A, B & C.
- 5.) CONCRETE SHALL BE TWO SACK ENCASEMENT.

MORENO VALLEY ELECTRIC UTILITY      DATE      1/12		<h2 style="margin: 0;">CITY OF MORENO VALLEY</h2> <p style="margin: 0; font-size: small;">PREPARED BY CAPITAL PROJECTS</p>	
APPROVED BY  DEPUTY PUBLIC WORKS DIRECTOR/ ACTING CITY ENGINEER	DIVISION MANAGER INITIAL  	<h3 style="margin: 0;">ELECTRIC ONLY TRENCH DETAILS FOR CONDUIT INSTALLATIONS</h3>	2 of 2  NO. <b>824B</b>