

SIDE VIEW

FRONT VIEW

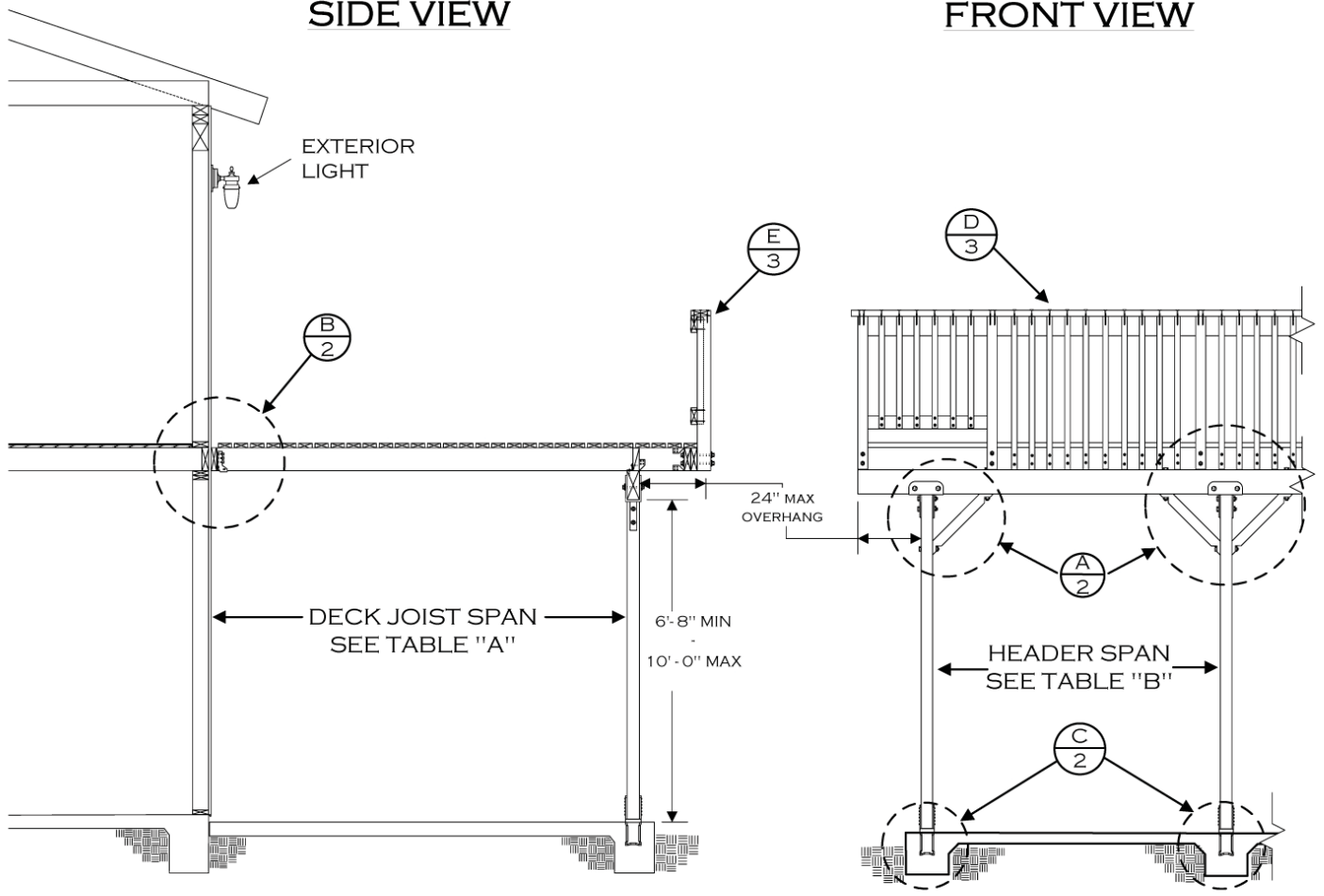


TABLE "A"
DECK JOIST SPANS
(DOUGLAS FIR #2 OR BETTER)

SIZE	SPACING	SPAN
2 x 6	12" o.c.	10' - 6"
	16" o.c.	9' - 0"
	24" o.c.	7' - 6"
2 x 8	12" o.c.	14' - 0"
	16" o.c.	12' - 0"
	24" o.c.	9' - 6"
2 x 10	16" o.c.	15' - 0"
	24" o.c.	12' - 0"
2 x 12	24" o.c.	14' - 0"
4 x 6	12" o.c.	14' - 6"
	16" o.c.	13' - 6"
4 x 8	24" o.c.	11' - 6"
	24" o.c.	15' - 0"
4 x 10	32" o.c.	15' - 0"

TABLE "B"
HEADER SIZING & SPANS
(DOUGLAS FIR #2 OR BETTER)

JOIST SPAN	HEADER	
	SIZE	SPAN
UPTO 8'-0"	4 X 8	8'-0"
	4 X 10	10'-0"
	4 X 12	11'-6"
	6 X 12	14'-0"
8'-1" - 10'-0"	4 X 8	7'-6"
	4 X 10	9'-6"
	4 X 12	11'-0"
	6 X 12	13'-0"
10'-1" - 12'-0"	4 X 8	7'-0"
	4 X 10	9'-0"
	4 X 12	10'-0"
	6 X 12	12'-0"
12'-1" - 15'-0"	4 X 8	6'-6"
	4 X 10	8'-0"
	4 X 12	9'-6"
	6 X 12	11'-0"

TABLE "C" Δ
LEDGER BOLT SPACING
(3/8 DIA. X 6" LAG BOLTS - SEE NOTE 1)

DECK JOIST SPAN	SPACING
8'-0" OR LESS	8" O.C.
8'-1" TO 10'-0"	6" O.C.
10'-1" TO 12'-0"	5-1/2" O.C.
12'-1" TO 14'-0"	4-1/2" O.C.
14'-1" TO 15'-0"	4" O.C.

NOTES:

1. LEDGER BOLTS SHALL BE 3/8" DIA. X 6" LONG WITH 1/4" DIA. PRE DRILLED HOLES. BOLTS ARE TO BE PLACED STAGGERED.
2. ALL METAL HARDWARE & SCREWS TO BE GALVANIZED OR OTHERWISE APPROVED CORROSION RESISTANCE
3. MAXIMUM 5' JOIST SPAN IF 2ND FLOOR IS CANTILEVERED AT LEDGER.
4. SHEAR WALLS MAY NOT BE MODIFIED UNLESS STRUCTURAL CALCULATIONS ARE SUBMITTED AND APPROVED BY THE BUILDING DEPARTMENT
5. USE OF THIS STANDARD IS LIMITED TO R-3 OCCUPANCIES (SINGLE FAMILY DWELLINGS AND DUPLEX) Δ

DISCLAIMER:

ALTERNATE DECK DESIGNS MAY BE POSSIBLE WHEN PROVIDED WITH AN ENGINEERED ANALYSIS. USE OF THIS CONVENTIONAL STANDARD DESIGN IS AT THE USER'S RISK AND CARRIES NO IMPLIED OR INFERRED GUARANTEE AGAINST FAILURE OR DEFECTS.

WESTERN RIVERSIDE COUNTY CODE UNIFORMITY PROGRAM



CITY OF MORENO VALLEY
Building & Safety Division

BALCONY/DECK STANDARD

951.413.3350

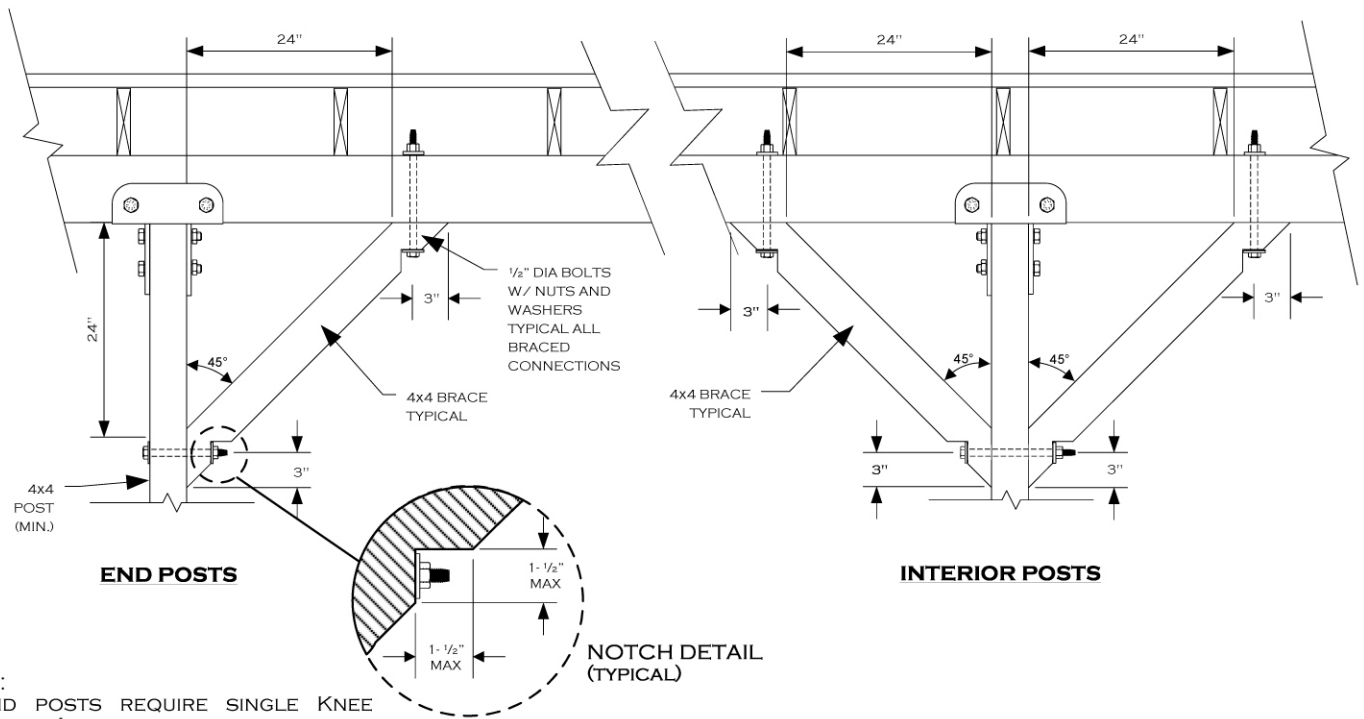
14177 FREDRICK ST
MORENO VALLEY CA, 92552

1/1/2009 Δ

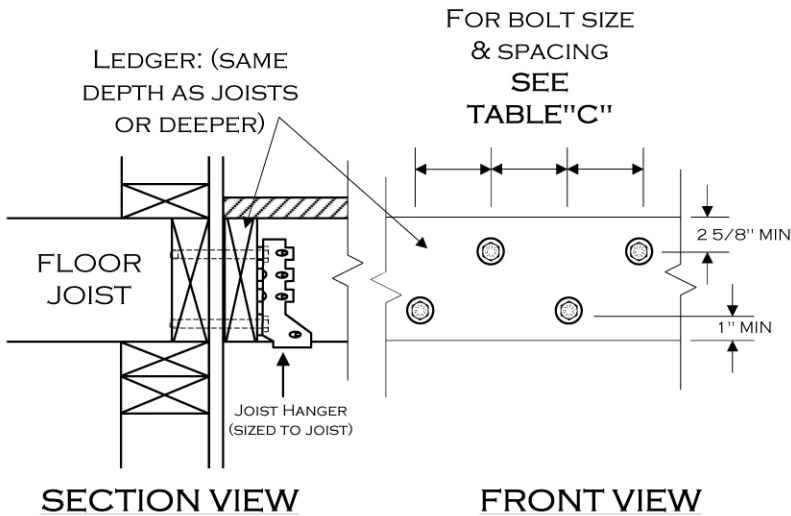
MVDeckSTDS2009.VSD

PAGE 1 OF 4

KNEE BRACE DETAIL (A)

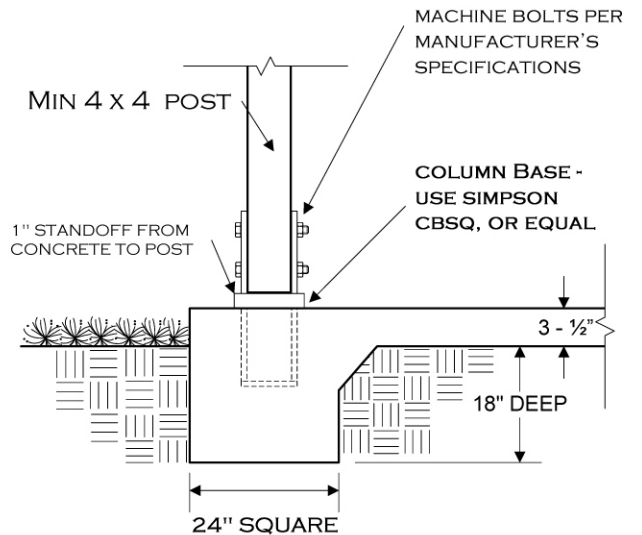


LEDGER DETAIL (B)



NOTE: THIS DECK CONNECTION DETAIL IS BASED ON THE ASSUMPTION THAT A MINIMUM 1-1/2" THICK WOOD MEMBER IS ADEQUATELY INSTALLED AT ALL EDGES OF THE 2ND FLOOR DIAPHRAGM. IF ANY OTHER MATERIAL IS USED, SUCH AS TJI JOISTS, A SPECIAL ENGINEERED DESIGN WILL BE REQUIRED. IT IS THE OWNER'S RESPONSIBILITY TO VERIFY THE PRESENCE OF THE APPROPRIATE RIM JOIST.

FOOTING DETAIL (C)



WESTERN RIVERSIDE COUNTY CODE UNIFORMITY PROGRAM



951.413.3350

CITY OF MORENO VALLEY
Building & Safety Division

BALCONY/DECK STANDARD

14177 FREDRICK ST
MORENO VALLEY CA, 92552

1/1/2009

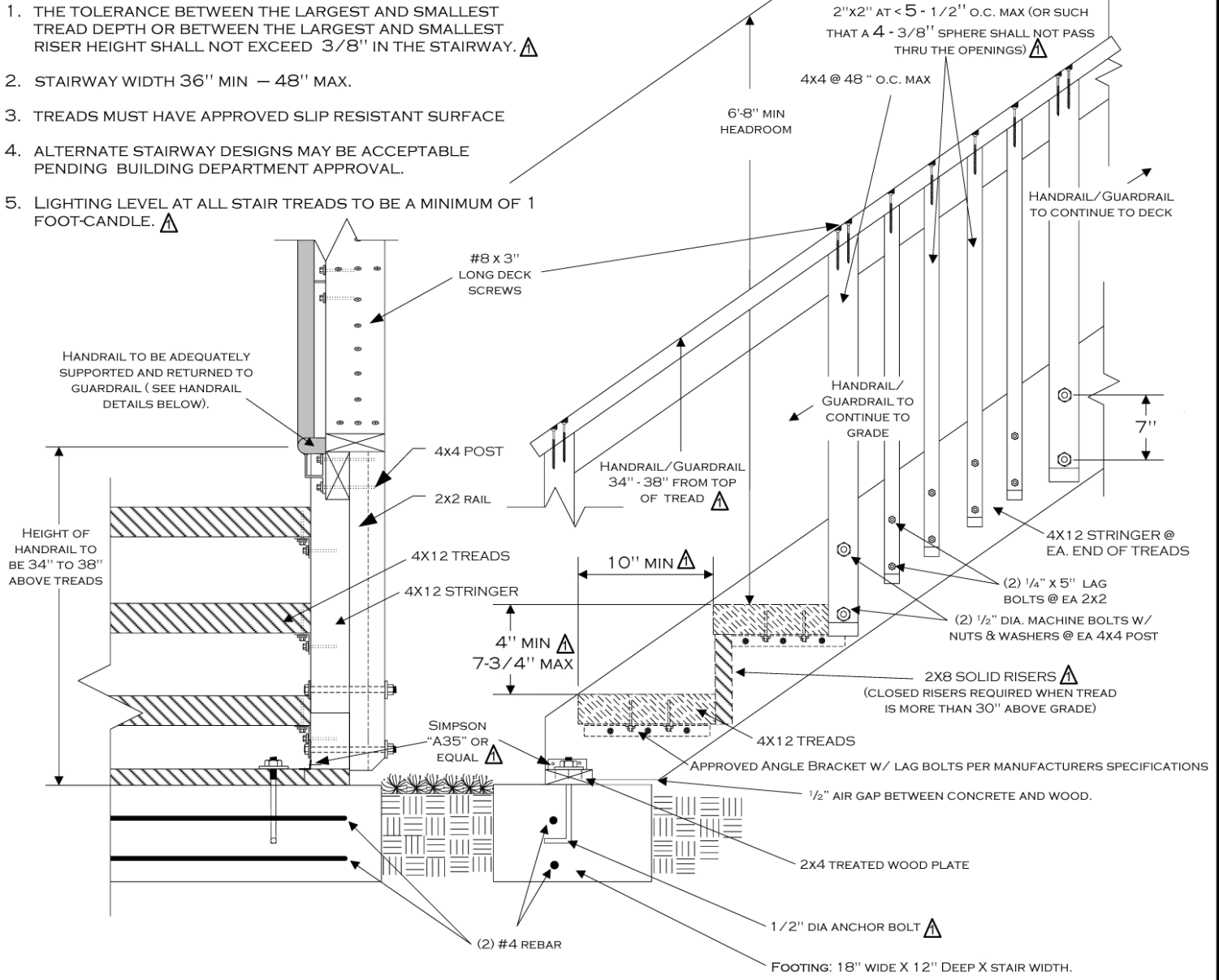
MVDECKSTDS2009.VSD

PAGE 2 OF 4

OPTIONAL EXTERIOR STAIRWAY

NOTES:

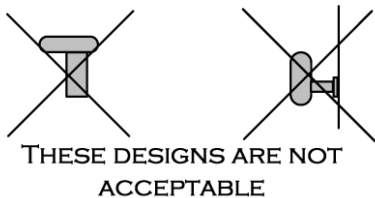
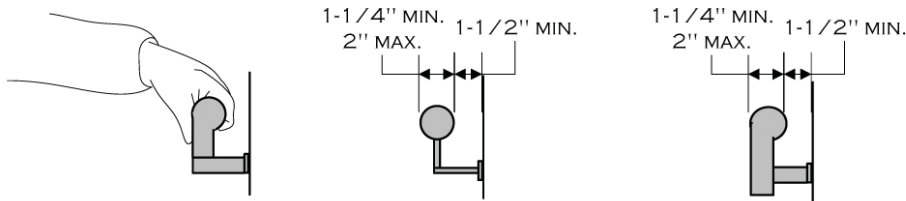
1. THE TOLERANCE BETWEEN THE LARGEST AND SMALLEST TREAD DEPTH OR BETWEEN THE LARGEST AND SMALLEST RISER HEIGHT SHALL NOT EXCEED 3/8" IN THE STAIRWAY. ⚠
2. STAIRWAY WIDTH 36" MIN – 48" MAX.
3. TREADS MUST HAVE APPROVED SLIP RESISTANT SURFACE
4. ALTERNATE STAIRWAY DESIGNS MAY BE ACCEPTABLE PENDING BUILDING DEPARTMENT APPROVAL.
5. LIGHTING LEVEL AT ALL STAIR TREADS TO BE A MINIMUM OF 1 FOOT-CANDLE. ⚠



FRONT VIEW

SIDE VIEW

HANDRAIL DETAILS



WESTERN RIVERSIDE COUNTY CODE UNIFORMITY PROGRAM	
	CITY OF MORENO VALLEY Building & Safety Division
	BALCONY/DECK STANDARD
14177 FREDRICK ST MORENO VALLEY CA, 92552	
951.413.3350	1/1/2009 ⚠ MVDECKSTDS2009.VSD PAGE 4 OF 4